

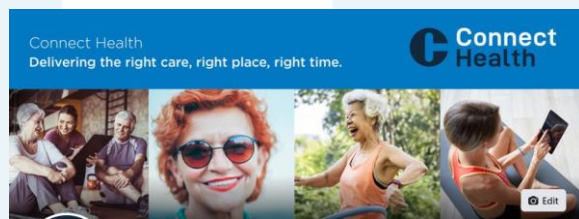


Virtual Student Placements

April 2020

Matthew Wyatt, Consultant Physiotherapist

Facebook Virtual Rehab and Patient Education



Connect Health
Physiotherapist

Send Message

Every Wednesday, until 29 Jul
Virtual Functional Rehab Class
Join in from home

Virtual exercise session you can join in live or watch at your leisure. These sessions are primarily recommended for those people who have been advised to join. [More](#)

DATE	TIME	STATUS
MAY 6	Wed 10:00	Full
MAY 13	Wed 10:00	Full

[Boost Event](#) [More](#)

Every Wednesday, until 5 Aug
Virtual Daily Home Workout
Join in from home

Virtual exercise session you can join in live or watch at your leisure. Previous sessions here: https://www.facebook.com/ConnectPhysiotherapy/live_videos/

[More](#)

DATE	TIME	STATUS
MAY 6	Wed 14:00	Full
MAY 13	Wed 14:00	Full

Osteoarthritis Group

Public group · 3 members

About Discussion Members Events Media

What's on your mind?

Photo/Video Tag people Feeling/Activity

New activity

Connect Health shared a link.

Helpful video for knee osteoarthritis
<https://youtu.be/08ZIN36a5ic>



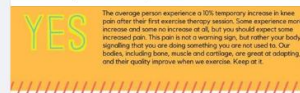
Knee Pain Info Video
This video was created by a team from the University of Melbourne...

Like Comment Share

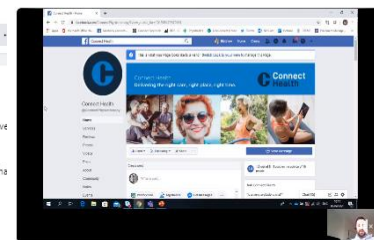
Comment as Connect Health

Connect Health
24 April at 08:22

Nice summary of exercise and pain with osteoarthritis



Featured Video



Where to find all our Virtual Exercise Classes and Suppo...

- Site tour to help you find all our
 - Exercise class videos
 - Live virtual exercise classes
 - Self help information and resources
- 314 views · 3 weeks ago

All Videos



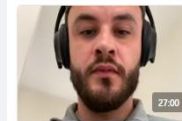
Lower body resistance band exercises
5 views · 8 minutes ago



Connect Health's video
42 views · about an hour ago



Shoulder pain exercises. Rotator cuff pain. With a physiotherapist.
188 views · a day ago



Physiotherapist led physiotherapy exercises using stairs. Exercises for joi...



Exercises for shoulder pain, neck pain, elbow pain, arm pain. Led by a...



Physiotherapist led physiotherapy exercises for lower back pain, spine...

<https://www.facebook.com/ConnectPhysiotherapy>

- Initial teaching on remote rehab and education from our clinical team
- Time to go away and plan rehab classes, educational talks and patient facing resources
- Presenting plans back to clinical team
- Taking over more and more of Live and pre-prepared resource management of the site

- Shadowing phone/ video clinics
 - Physio
 - Occ Health
 - NHS
 - Advanced Practice Clinics
 - Pain
 - Observe virtual pain management programme
 - Rheumatology

- With patients consent students will be able to
 - Listen to the patient clinician conversation
 - Discuss the patient's presentation, differential diagnosis and management plan with the clinician either after the consultation or if the patient consents during a mini-break in the call (dial patient off and call them back post chat)
 - Write up and present interesting cases to Connect Student Academy

the academy

THINK BIG



The Academy

Open group

About [Posts](#) Files More ▾

Week 2 – MSK (Self-Management Advice)

WB 06/04/20	Mon	Tues	Wed	Thurs	Fri
07:50-08:10 Connect with a Coffee	Ash James - Non-Specific Mechanical LBP	Andrew Cuff – Manging Uncertainty	Neil Swift – Hip Pain and differentials	Marwan Al-Dawoud – Frozen Shoulder	Good Friday
10:00-10:30 Clinical Connections		Clinical Baton! Ash J/Matt W/ Andrew C/ Gail S/ Steve N			
16:40-17:10 Connect with a Case	Connect with a Case Phil	Connect with a Case Elly	Connect with a Case Ash	Connect with a Case Mike Carpenter	

Access to

Live and full library of;

- Connect with a Coffee – 20min CPD bite
- Connect with a Case – 30min case discussion
- By end of placement present one of each

Support

Coordinator	Rory Twogood
Facebook Lead educator	Tom Flannigan

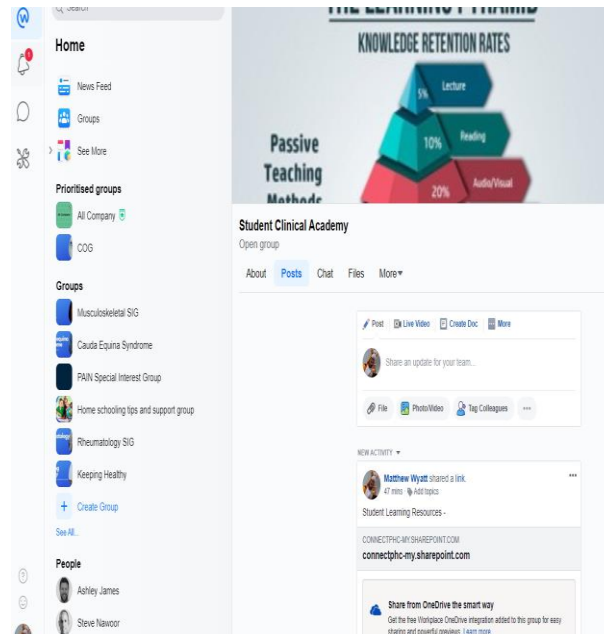
Role	Description
Mentors	Support and evaluate 1 or more students
Clinicians to shadow	All students to join and shadow your phone or video consults. Discuss the case with the students in any gaps
Reviewers	To support the students in developing content for Facebook, Clinical Coffee and Connect with a Case

Resources

Academy

Virtual PMPs

Clinic shadowing



The screenshot shows a Facebook group interface. On the left is a navigation menu with 'Home', 'Groups', and 'Prioritised groups'. The main content area displays the 'Student Clinical Academy' group page. At the top, there's a banner titled 'KNOWLEDGE RETENTION RATES' with a 3D bar chart showing: Lecture (5%), Reading (10%), and Audio/Visual (20%). Below the banner, the group name 'Student Clinical Academy' is shown with an 'Open group' status. There are tabs for 'About', 'Posts', 'Chat', 'Files', and 'More'. A post section shows a user sharing an update. Below that, a 'NEW ACTIVITY' section shows a link shared by Matthew Wyatt. At the bottom, there's a section for 'Share from OneDrive the smart way'.

- Day to day interactions with clinicians, mentor, other students
- Connect with a Case presentation – 30min case study presented to other students and clinical team
- Connect with a Coffee – 20min presentation on agree topic
I.e. LBP rehab
- Facebook content contributions

Example Time Table

Monday	Tuesday	Wednesday	Thursday	Friday
Induction Goal setting	Shadowing Clinic	Clinical Academy resource use	Facebook content planning	Clinical Academy resource use
Intro to Facebook	Facebook content planning	Shadowing	Facebook content review with mentor	Live Facebook class

Monday	Tuesday	Wednesday	Thursday	Friday
Catch up with mentor Clinical Academy resource use	Shadowing Clinic	Clinical Academy resource use	Facebook content planning	Clinical Academy resource use
Shadowing Clinic	Facebook content planning	Shadowing	Facebook content review with mentor	Live Facebook class

The Future of Placements?